



Schweizerische Eidgenossenschaft
Confédération suisse
Confederazione Svizzera
Confederaziun svizra

WOCHENBERICHT

BULLETIN HEBDOMADAIRE

Bundesamt für Energie BFE

SPEICHERINHALT

CONTENU DES BASSINS D'ACCUMULATION

2018	Speicherinhalt - Contenu des bassins d'accumulation										Rhein in Rheinfelden - Rhin à Rheinfelden		
	Wallis - Valais		Graubünden - Grisons		Tessin - Tessin		Übrige CH - Reste CH		Total Schweiz- Suisse		Langjähriger Tagesmittelwert Moyenne journalière de longue date m³/s / 1933-2016	Aufgetretene Wasserführung Débit effectif m³/s / 12.00h	
	GWh	%	GWh	%	GWh	%	GWh	%	GWh	%			%
	4'035		1'980		1'230		1'580		8'625				
Montag / Lundi 00:00h													
01.01.2018	1'934	48.0%	1'040	52.5%	432	35.0%	955	60.1%	4'361	49.4%	781	1'285	165%
08.01.2018	1'923	47.7%	1'042	52.6%	435	35.2%	997	62.7%	4'397	49.8%	779	1'927	247%
15.01.2018	1'871	46.4%	953	48.1%	403	32.6%	947	59.6%	4'174	47.3%	804	1'280	159%
22.01.2018	1'784	44.2%	870	43.9%	384	31.2%	915	57.9%	3'953	44.8%	750	2'382	318%
29.01.2018	1'648	40.8%	809	40.9%	366	29.8%	899	56.9%	3'722	42.2%	759	1'684	222%
05.02.2018	1'484	36.8%	734	37.1%	343	27.9%	851	53.9%	3'412	38.7%	823	1'263	153%
12.02.2018	1'285	31.8%	639	32.3%	305	24.8%	757	47.9%	2'986	33.8%	823	946	115%
19.02.2018	1'122	27.8%	572	28.9%	269	21.9%	700	44.3%	2'663	30.2%	772	1'516	196%
26.02.2018	925	22.9%	442	22.3%	232	18.9%	599	37.9%	2'198	24.9%	815	885	109%
05.03.2018	599	14.8%	300	15.2%	185	15.0%	395	25.0%	1'479	16.8%	823	820	100%
12.03.2018	462	11.4%	281	14.2%	166	13.5%	340	21.5%	1'249	14.2%	849	957	113%
19.03.2018	368	9.1%	264	13.3%	161	13.1%	317	20.1%	1'110	12.6%	864	908	105%
26.03.2018	292	7.2%	239	12.1%	152	12.4%	287	18.2%	970	11.0%	934	656	70%
02.04.2018	234	5.8%	196	9.9%	166	13.5%	287	18.2%	883	10.0%	958	1'034	108%
09.04.2018	211	5.2%	197	9.9%	139	11.3%	311	19.7%	858	9.7%	1'007	1'064	106%
16.04.2018	173	4.3%	190	9.6%	136	11.1%	309	19.6%	808	9.2%	1'016	1'035	102%
23.04.2018	183	4.5%	239	12.1%	160	13.0%	351	22.2%	933	10.6%	1'056	1'126	107%
30.04.2018	229	5.7%	353	17.8%	213	17.3%	436	27.6%	1'231	13.9%	1'098	1'194	109%
07.05.2018	260	6.4%	450	22.7%	272	22.1%	491	31.1%	1'473	16.7%	1'159	1'071	92%
14.05.2018	376	9.3%	566	28.6%	352	28.6%	565	35.8%	1'859	21.1%	1'262	1'240	98%
21.05.2018	430	10.7%	613	31.0%	407	33.1%	611	38.7%	2'061	23.4%	1'314	1'166	89%
28.05.2018	550	13.6%	693	35.0%	493	40.1%	662	41.9%	2'398	27.2%	1'332	1'166	88%
04.06.2018	850	21.1%	885	44.7%	639	52.0%	752	47.6%	3'126	35.4%	1'420	1'189	84%
11.06.2018	1'086	26.9%	999	50.5%	738	60.0%	822	52.0%	3'645	41.3%	1'523	1'277	84%
18.06.2018	1'394	34.5%	1'102	55.7%	845	68.7%	937	59.3%	4'278	48.5%	1'535	1'230	80%
25.06.2018	1'737	43.0%	1'176	59.4%	913	74.2%	1'035	65.5%	4'861	55.1%	1'512	954	63%

Quelle Daten Wasserführung Rhein in Rheinfelden: Bundesamt für Umwelt BAFU

2018	Speicherinhalt - Contenu des bassins d'accumulation										Rhein in Rheinfelden - Rhin à Rheinfelden		
	Wallis - Valais		Graubünden - Grisons		Tessin - Tessin		Übrige CH - Reste CH		Total Schweiz- Suisse		Langjähriger Tagesmittelwert	Aufgetretene Wasserführung	
	GWh 4'035	%	GWh 1'980	%	GWh 1'240	%	GWh 1'580	%	GWh 8835 (ab 1.10.)	%	Moyenne journalière de longue date m³/s / 1933-2016	Débit effectif m³/s / 12:00h	%
Montag / Lundi 00:00h													
02.07.2018	2'011	49.8%	1'204	60.8%	895	72.8%	1'045	66.1%	5'155	58.4%	1'478	821	56%
09.07.2018	2'327	57.7%	1'244	62.8%	967	78.6%	1'103	69.8%	5'641	63.9%	1'454	852	59%
16.07.2018	2'567	63.6%	1'279	64.6%	966	78.5%	1'112	70.4%	5'924	67.1%	1'444	681	47%
23.07.2018	2'753	68.2%	1'333	67.3%	964	78.4%	1'136	71.9%	6'186	70.1%	1'387	690	50%
30.07.2018	2'914	72.2%	1'365	68.9%	960	78.0%	1'147	72.6%	6'386	72.4%	1'296	571	44%
06.08.2018	3'099	76.8%	1'384	69.9%	948	77.1%	1'170	74.1%	6'601	74.8%	1'226	533	43%
13.08.2018	3'294	81.6%	1'426	72.0%	956	77.7%	1'228	77.7%	6'904	78.2%	1'248	562	45%
20.08.2018	3'427	84.9%	1'463	73.9%	969	78.8%	1'278	80.9%	7'137	80.9%	1'164	500	43%
27.08.2018	3'519	87.2%	1'486	75.1%	968	78.7%	1'302	82.4%	7'275	82.4%	1'147	571	50%
03.09.2018	3'556	88.1%	1'537	77.6%	966	78.5%	1'337	84.6%	7'396	83.8%	1'094	701	64%
10.09.2018	3'583	88.8%	1'569	79.2%	966	78.5%	1'329	84.1%	7'447	84.4%	1'032	623	60%
17.09.2018	3'666	90.9%	1'581	79.8%	970	78.9%	1'350	85.4%	7'567	85.7%	1'019	523	51%
24.09.2018	3'696	91.6%	1'597	80.7%	974	79.2%	1'350	85.4%	7'617	86.3%	968	566	58%
01.10.2018	3'688	91.4%	1'615	81.6%	974	78.5%	1'331	84.2%	7'608	86.1%	917	560	61%
08.10.2018	3'606	89.4%	1'612	81.4%	965	77.8%	1'283	81.2%	7'466	84.5%	911	492	54%
15.10.2018	3'536	87.6%	1'589	80.3%	953	76.9%	1'278	80.9%	7'356	83.3%	867	423	49%
22.10.2018	3'446	85.4%	1'526	77.1%	938	75.6%	1'264	80.0%	7'174	81.2%	818	395	48%
29.10.2018	3'331	82.6%	1'495	75.5%	932	75.2%	1'255	79.4%	7'013	79.4%	818	382	47%
05.11.2018	3'238	80.2%	1'529	77.2%	974	78.5%	1'286	81.4%	7'027	79.5%	806	444	55%
12.11.2018	3'199	79.3%	1'569	79.2%	1'031	83.1%	1'280	81.0%	7'079	80.1%	819	418	51%
19.11.2018	3'144	77.9%	1'563	78.9%	1'040	83.9%	1'279	80.9%	7'026	79.5%	861	396	46%
26.11.2018	2'981	73.9%	1'470	74.2%	994	80.2%	1'221	77.3%	6'666	75.4%	830	390	47%
03.12.2018	2'889	71.6%	1'397	70.6%	960	77.4%	1'187	75.1%	6'433	72.8%	811	738	91%
10.12.2018	2'855	70.8%	1'351	68.2%	949	76.5%	1'223	77.4%	6'378	72.2%	824	1'122	136%
17.12.2018	2'698	66.9%	1'212	61.2%	886	71.5%	1'137	72.0%	5'933	67.2%	832	568	68%
24.12.2018	2'643	65.5%	1'152	58.2%	843	68.0%	1133	71.7%	5'771	65.3%	824	1'976	240%

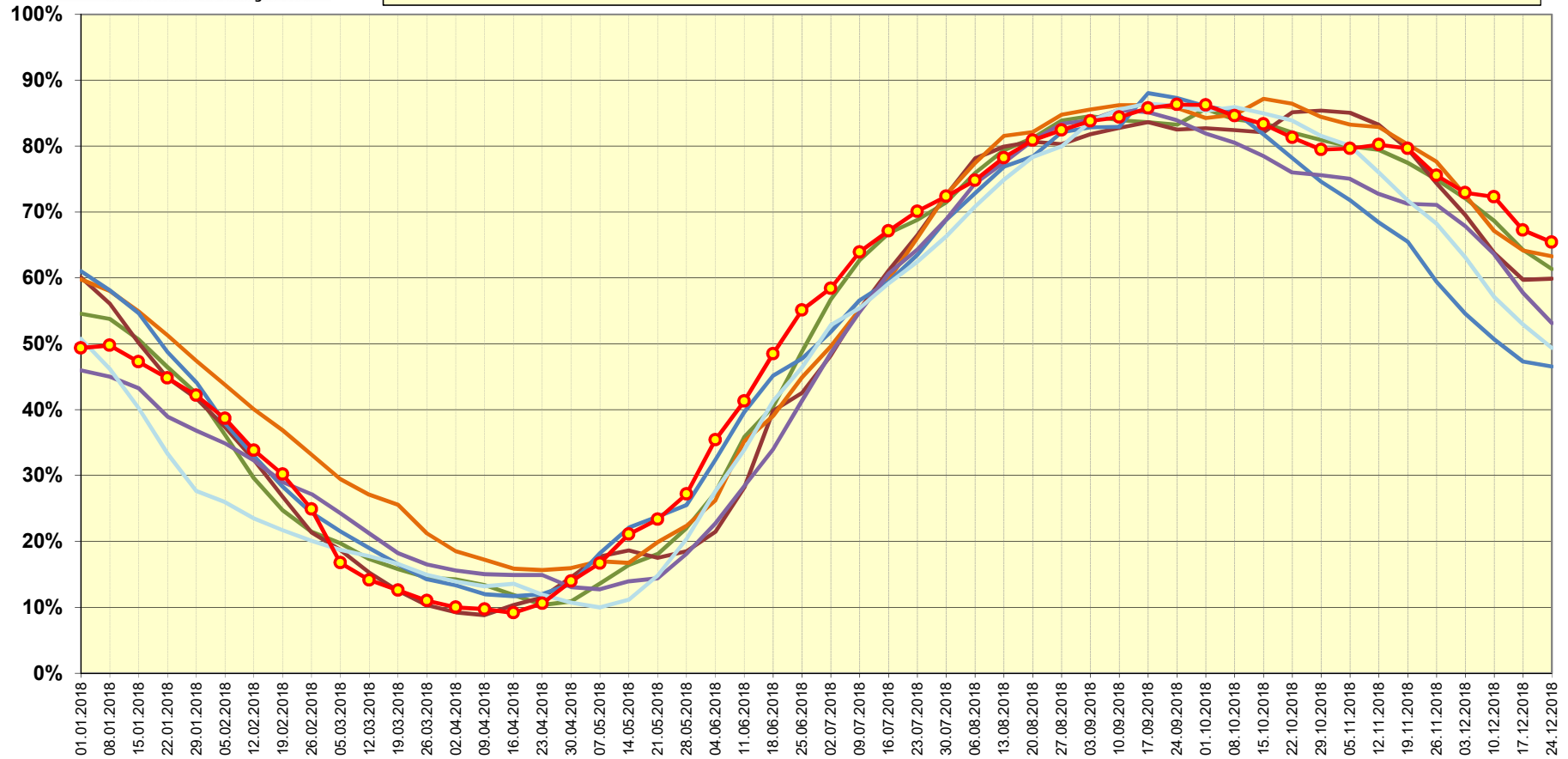
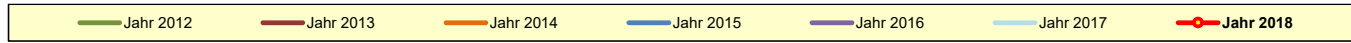
Quelle Daten Wasserführung Rhein in Rheinfelden: Bundesamt für Umwelt BAFU



Schweizerische Eidgenossenschaft
Confédération suisse
Confederazione Svizzera
Confederaziun svizra

Speicherinhalt Schweiz (100% = 8'835 GWh)

Bundesamt für Energie BFE
Office fédéral de l'énergie OFEN



Verlauf des Speicherinhalts 2017/2018 (Stand Ende Monat)

(Schwankungsbreite hoch / tief 1972/73 bis 2017/18)

100% = 8'835 GWh

