

WOCHENBERICHT

BULLETIN HEBDOMADAIRE

Bundesamt für Energie BFE

SPEICHERINHALT

CONTENU DES BASSINS D'ACCUMULATION

2015	Speicherinhalt - Contenu des bassins d'accumulation										Rhein in Rheinfelden - Rhin à Rheinfelden		
	Wallis - Valais		Graubünden - Grisons		Tessin - Tessin		Übrige CH - Reste CH		Total Schweiz- Suisse		Langjähriger Tagesmittelwert Moyenne journalière de longue date m³/s / 1933-2012	Aufgetretene Wasserführung Débit effectif m³/s / 12:00h	
	GWh 4'000	%	GWh 1'980	%	GWh 1'230	%	GWh 1'605	%	GWh 8'815	%			%
Montag / Lundi 00:00h													
05.01.2015	2'365	59.2%	1'327	67.0%	756	61.5%	920	57.9%	5'368	61.0%	778	1'229	158%
12.01.2015	2'241	56.1%	1'247	63.0%	708	57.6%	913	57.4%	5'109	58.1%	770	1'208	157%
19.01.2015	2'095	52.4%	1'156	58.4%	663	53.9%	890	56.0%	4'804	54.6%	764	1'117	146%
26.01.2015	1'857	46.5%	1'017	51.4%	594	48.3%	818	51.4%	4'286	48.7%	786	864	110%
02.02.2015	1'657	41.5%	910	46.0%	532	43.3%	780	49.1%	3'879	44.1%	760	823	108%
09.02.2015	1'380	34.5%	774	39.1%	460	37.4%	718	45.2%	3'332	37.9%	858	668	78%
16.02.2015	1'160	29.0%	665	33.6%	398	32.4%	679	42.7%	2'902	33.0%	802	648	81%
23.02.2015	960	24.0%	557	28.1%	339	27.6%	635	39.9%	2'491	28.3%	813	648	80%
02.03.2015	794	19.9%	458	23.1%	289	23.5%	600	37.7%	2'141	24.3%	824	1'242	151%
09.03.2015	669	16.7%	394	19.9%	246	20.0%	582	36.6%	1'891	21.5%	803	871	108%
16.03.2015	577	14.4%	346	17.5%	209	17.0%	539	33.9%	1'671	19.0%	840	783	93%
23.03.2015	496	12.4%	293	14.8%	176	14.3%	489	30.8%	1'454	16.5%	923	823	89%
30.03.2015	410	10.3%	253	12.8%	148	12.0%	441	27.7%	1'252	14.2%	950	1'397	147%
06.04.2015	367	9.2%	219	11.1%	134	10.9%	452	28.4%	1'172	13.3%	972	1'464	151%
13.04.2015	322	8.1%	207	10.5%	110	8.9%	418	26.3%	1'057	12.0%	1'009	1'003	99%
20.04.2015	291	7.3%	199	10.1%	107	8.7%	432	27.2%	1'029	11.7%	1'034	1'036	100%
27.04.2015	273	6.8%	222	11.2%	117	9.5%	443	27.9%	1'055	12.0%	1'079	1'046	97%
04.05.2015	290	7.3%	239	12.1%	141	11.5%	520	32.7%	1'190	13.5%	1'115	2'549	229%
11.05.2015	418	10.5%	355	17.9%	219	17.8%	612	38.5%	1'604	18.2%	1'183	1'999	169%
18.05.2015	488	12.2%	504	25.5%	313	25.4%	639	40.2%	1'944	22.1%	1'253	1'881	150%
25.05.2015	500	12.5%	603	30.5%	378	30.7%	608	38.2%	2'089	23.7%	1'314	1'476	112%
01.06.2015	554	13.9%	660	33.3%	420	34.1%	609	38.3%	2'243	25.5%	1'393	1'177	84%
08.06.2015	789	19.7%	841	42.5%	538	43.7%	681	42.8%	2'849	32.4%	1'469	1'399	95%
15.06.2015	1'067	26.7%	1'023	51.7%	659	53.6%	736	46.3%	3'485	39.6%	1'513	1'936	128%
22.06.2015	1'282	32.1%	1'120	56.6%	749	60.9%	823	51.8%	3'974	45.2%	1'513	1'558	103%
29.06.2015	1'403	35.1%	1'172	59.2%	788	64.1%	838	52.7%	4'201	47.7%	1'498	1'270	85%

Quelle Daten Wasserführung Rhein in Rheinfelden: Bundesamt für Umwelt BAFU



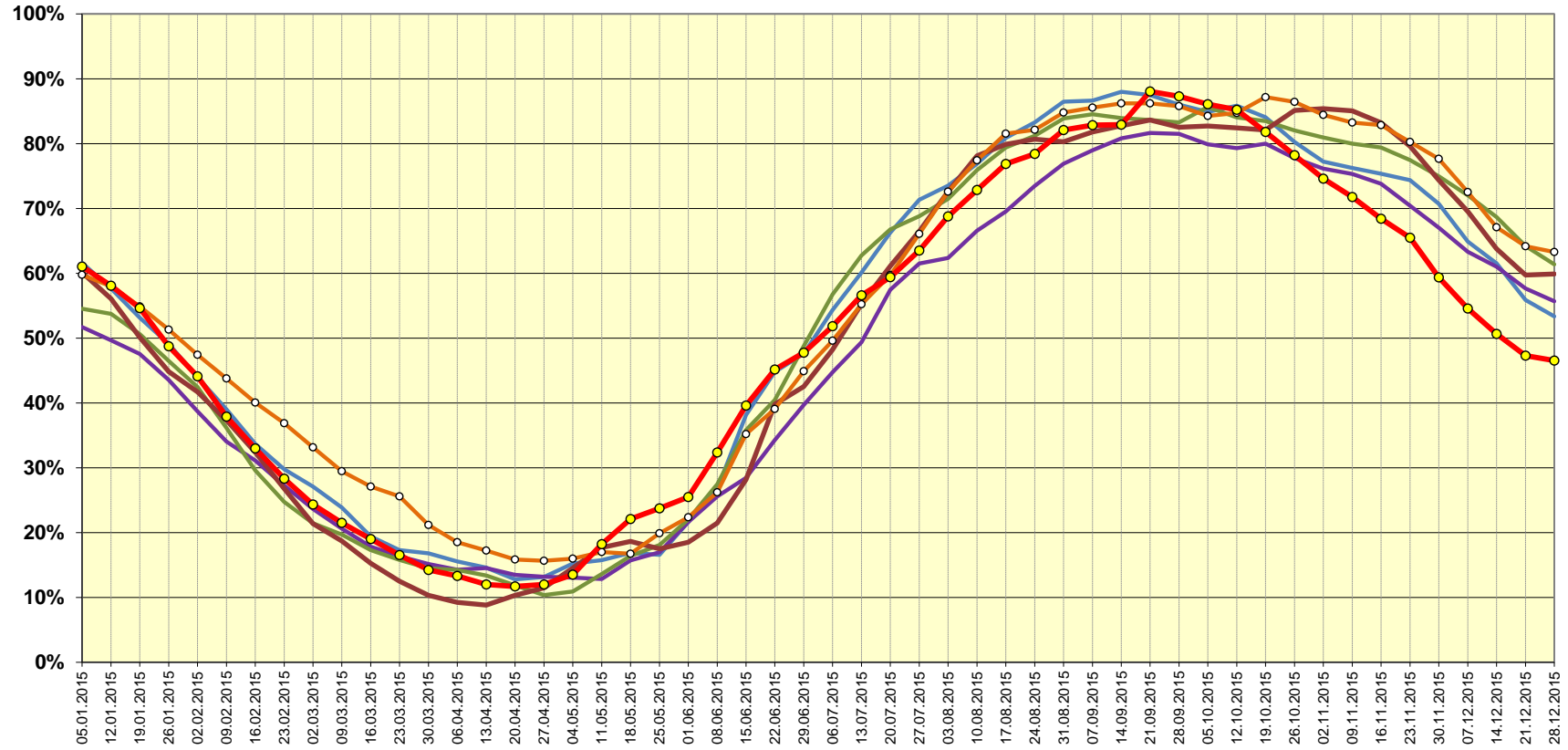
2015	Speicherinhalt - Contenu des bassins d'accumulation										Rhein in Rheinfelden - Rhin à Rheinfelden		
	Wallis - Valais		Graubünden - Grisons		Tessin - Tessin		Übrige CH - Reste CH		Total Schweiz- Suisse		Langjähriger Tagesmittelwert	Aufgetretene Wasserführung	
	GWh		GWh		GWh		GWh		GWh		Moyenne journalière de longue date	Débit effectif	
	4'000	%	1'980	%	1'230	%	1'605	%	8'815	%	m³/s / 1933-2012	m³/s / 12.00h	%
Montag / Lundi 00:00h													
06.07.2015	1'632	40.8%	1'232	62.2%	833	67.7%	864	54.3%	4'561	51.7%	1'457	1'004	69%
13.07.2015	1'926	48.2%	1'282	64.7%	853	69.3%	919	57.8%	4'980	56.5%	1'426	912	64%
20.07.2015	2'164	54.1%	1'279	64.6%	850	69.1%	935	58.8%	5'228	59.3%	1'419	837	59%
27.07.2015	2'428	60.7%	1'291	65.2%	847	68.9%	1'022	64.3%	5'588	63.4%	1'354	793	59%
03.08.2015	2'711	67.8%	1'350	68.2%	873	71.0%	1'118	70.3%	6'052	68.7%	1'237	705	57%
10.08.2015	2'967	74.2%	1'387	70.1%	884	71.9%	1'174	73.8%	6'412	72.7%	1'241	695	56%
17.08.2015	3'179	79.5%	1'424	71.9%	910	74.0%	1'251	78.7%	6'764	76.7%	1'199	787	66%
24.08.2015	3'208	80.2%	1'474	74.4%	933	75.9%	1'286	80.9%	6'901	78.3%	1'202	725	60%
31.08.2015	3'389	84.7%	1'537	77.6%	987	80.2%	1'310	82.4%	7'223	81.9%	1'143	628	55%
07.09.2015	3'445	86.1%	1'562	78.9%	977	79.4%	1'306	82.1%	7'290	82.7%	1'066	575	54%
14.09.2015	3'445	86.1%	1'589	80.3%	981	79.8%	1'283	80.7%	7'298	82.8%	1'024	557	54%
21.09.2015	3'526	88.2%	1'727	87.2%	1'134	92.2%	1'360	85.5%	7'747	87.9%	964	682	71%
28.09.2015	3'485	87.1%	1'736	87.7%	1'127	91.6%	1'334	83.9%	7'682	87.1%	962	656	68%
05.10.2015	3'436	85.9%	1'723	87.0%	1'128	91.7%	1'287	80.9%	7'574	85.9%	892	573	64%
12.10.2015	3'392	84.8%	1'726	87.2%	1'109	90.2%	1'273	80.1%	7'500	85.1%	891	583	65%
19.10.2015	3'247	81.2%	1'680	84.8%	1'075	87.4%	1'197	75.3%	7'199	81.7%	851	707	83%
26.10.2015	3'120	78.0%	1'625	82.1%	1'023	83.2%	1'114	70.1%	6'882	78.1%	816	520	64%
02.11.2015	2'967	74.2%	1'580	79.8%	978	79.5%	1'052	66.2%	6'577	74.6%	785	503	64%
09.11.2015	2'846	71.2%	1'539	77.7%	928	75.4%	1'013	63.1%	6'326	71.8%	796	494	62%
16.11.2015	2'722	68.1%	1'475	74.5%	876	71.2%	957	59.6%	6'030	68.4%	846	456	54%
23.11.2015	2'597	64.9%	1'401	70.8%	828	67.3%	945	58.9%	5'771	65.5%	858	757	88%
30.11.2015	2'380	59.5%	1'266	63.9%	750	61.0%	838	52.2%	5'234	59.4%	819	696	85%
07.12.2015	2'183	54.6%	1'160	58.6%	682	55.4%	785	48.9%	4'810	54.6%	815	611	75%
14.12.2015	2'018	50.5%	1'078	54.4%	640	52.0%	729	45.4%	4'465	50.7%	822	546	66%
21.12.2015	1'859	46.5%	1'017	51.4%	596	48.5%	697	43.4%	4'169	47.3%	829	537	65%
28.12.2015	1808	45.2%	1023	51.7%	581	47.2%	689	42.9%	4'101	46.5%	792	474	60%



Schweizerische Eidgenossenschaft
Confédération suisse
Confederazione Svizzera
Confederaziun svizra

Speicherinhalt Schweiz (100% = 8'815 GWh)

Bundesamt für Energie BFE
Office fédéral de l'énergie OFEN





Schweizerische Eidgenossenschaft
Confédération suisse
Confederazione Svizzera
Confederaziun svizra

Verlauf des Speicherinhalts 2014/2015 (Stand Ende Monat) (Schwankungsbreite hoch / tief 1972/73 bis 2014/15)

100% = 8'815 GWh

Bundesamt für Energie BFE
Office fédéral de l'énergie OFEN

