

2008	Speicherinhalt - Contenu des bassins d'accumulation										Rhein in Rheinfelden - Rhin à Rheinfelden		
	Wallis - Valais		Graubünden - Grisons		Tessin - Tessin		Übrige CH - Reste CH		Total Schweiz - Suisse		Interpolierter Mittelwert Moyenne interpolée m³/s / 1935-2007	Aufgetretene Wasserführung Débit effective m³/s / 12:00h	
	GWh	%	GWh	%	GWh	%	GWh	%	GWh	%			%
Montag / Lundi 00:00h	3'720		1'970		1'220		1'600		8'510				
07.01.2008	1'872	50.3%	1'189	60.4%	563	46.0%	894	55.9%	4'518	53.1%	783	991	127%
14.01.2008	1'756	47.2%	1'049	53.2%	543	44.3%	899	56.2%	4'247	49.9%	774	787	102%
21.01.2008	1'635	44.0%	993	50.4%	523	42.7%	864	54.0%	4'015	47.2%	783	807	103%
28.01.2008	1'480	39.8%	909	46.1%	500	40.8%	817	51.1%	3'706	43.5%	795	760	96%
04.02.2008	1'353	36.4%	834	42.3%	472	38.5%	748	46.8%	3'407	40.0%	807	611	76%
11.02.2008	1'223	32.9%	761	38.6%	450	36.7%	690	43.1%	3'124	36.7%	818	611	75%
18.02.2008	1'094	29.4%	672	34.1%	424	34.6%	591	36.9%	2'781	32.7%	831	550	66%
25.02.2008	976	26.2%	589	29.9%	394	32.2%	523	32.7%	2'482	29.2%	845	568	67%
03.03.2008	875	23.5%	534	27.1%	368	30.0%	520	32.5%	2'297	27.0%	860	793	92%
10.03.2008	765	20.6%	460	23.4%	333	27.2%	487	30.4%	2'045	24.0%	874	623	71%
17.03.2008	681	18.3%	415	21.1%	314	25.6%	494	30.9%	1'904	22.4%	894	940	105%
24.03.2008	607	16.3%	361	18.3%	287	23.4%	450	28.1%	1'705	20.0%	929	933	100%
31.03.2008	527	14.2%	295	15.0%	269	22.0%	394	24.6%	1'485	17.5%	964	940	98%
07.04.2008	448	12.0%	247	12.5%	249	20.3%	370	23.1%	1'314	15.4%	999	1'013	101%
14.04.2008	367	9.9%	198	10.0%	234	19.1%	355	22.2%	1'154	13.6%	1'034	1'349	130%
21.04.2008	290	7.8%	158	8.0%	224	18.3%	341	21.3%	1'013	11.9%	1'083	983	91%
28.04.2008	253	6.8%	155	7.8%	231	18.9%	392	24.5%	1'031	12.1%	1'134	1'510	133%
05.05.2008	241	6.5%	183	9.3%	246	20.1%	436	27.3%	1'106	13.0%	1'185	1'247	105%
12.05.2008	263	7.1%	262	13.3%	284	23.2%	492	30.8%	1'301	15.3%	1'236	1'208	98%
19.05.2008	293	7.9%	378	19.2%	332	27.1%	547	34.2%	1'551	18.2%	1'289	1'341	104%
26.05.2008	339	9.1%	482	24.4%	401	32.7%	578	36.1%	1'800	21.2%	1'344	1'208	90%
02.06.2008	653	17.6%	746	37.8%	573	46.8%	732	45.8%	2'704	31.8%	1'399	1'437	103%
09.06.2008	793	21.3%	932	47.2%	677	55.3%	814	50.9%	3'216	37.8%	1'453	1'567	108%
16.06.2008	922	24.8%	1'033	52.3%	739	60.3%	876	54.8%	3'570	42.0%	1'497	1'493	100%
23.06.2008	1'073	28.8%	1'124	56.9%	801	65.4%	908	56.8%	3'906	45.9%	1'479	1'309	88%
30.06.2008	1'438	38.7%	1'245	63.0%	880	71.8%	1'017	63.6%	4'580	53.8%	1'462	1'309	90%

WOCHENBERICHT

SPEICHERINHALT

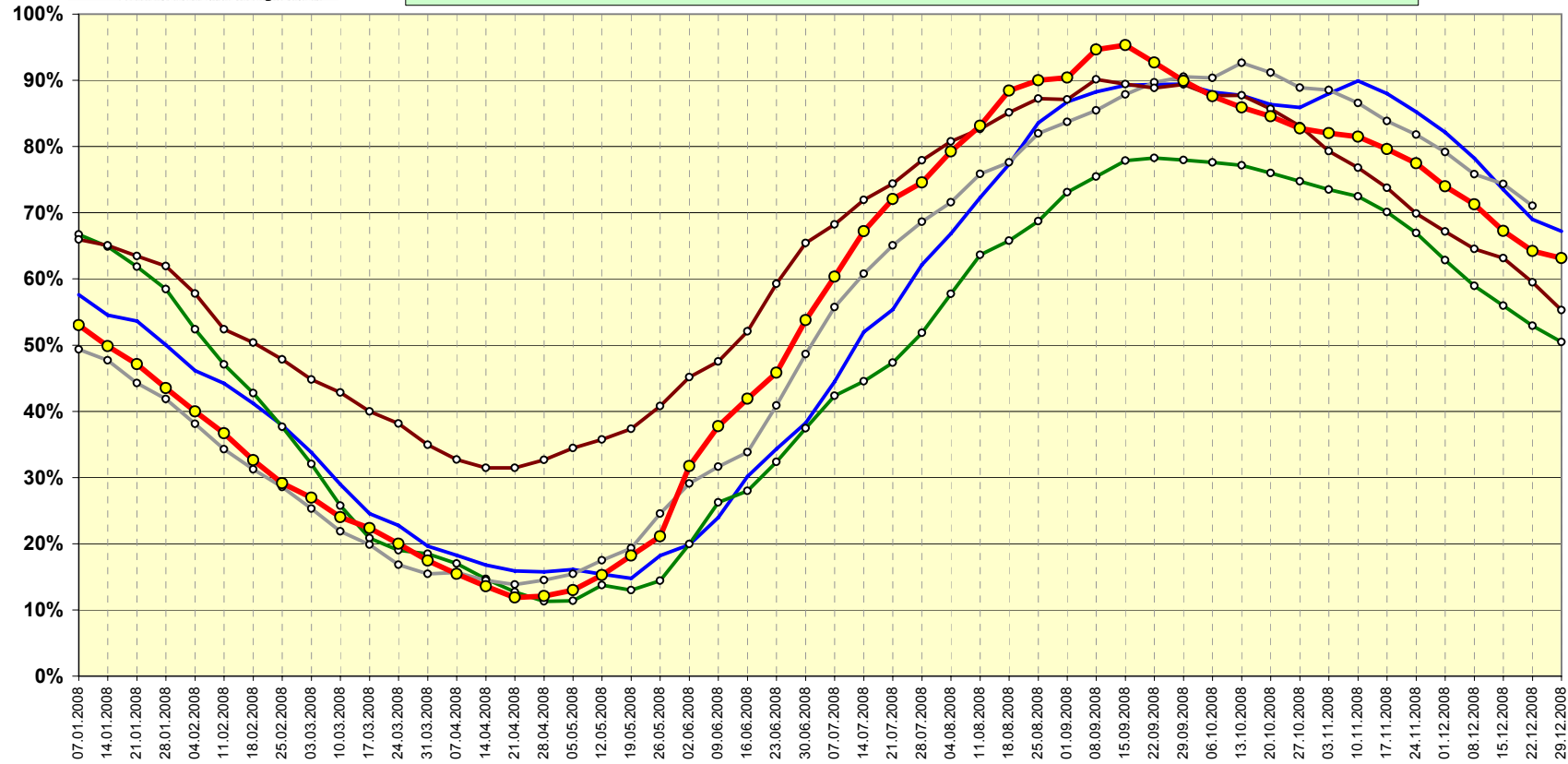
BULLETIN HEBDOMADAIRE

CONTENU DES BASSINS D'ACCUMULATION

2008	Speicherinhalt - Contenu des bassins d'accumulation										Rhein in Rheinfelden - Rhin à Rheinfelden		
	Wallis -Valais		Graubünden - Grisons		Tessin - Tessin		Übrige CH - Reste CH		Total Schweiz - Suisse		Interpolierter Mittelwert	Aufgetretene Wasserführung	%
	GWh	%	GWh ab 1.10.08	%	GWh	%	GWh	%	GWh	%	Moyenne interpolée	Débit effective	
3'720	%	1'965	%	1'220	%	1'600	%	8'505	%	m³/s / 1935-2007	m³/s / 12:00h		
Montag / Lundi 00:00h													
07.07.2008	1'763	47.4%	1'331	67.4%	932	76.1%	1'116	69.8%	5'142	60.4%	1'444	1'294	90%
14.07.2008	2'070	55.6%	1'490	75.4%	976	79.7%	1'189	74.3%	5'725	67.3%	1'426	1'892	133%
21.07.2008	2'288	61.5%	1'600	81.2%	990	81.1%	1'254	78.4%	6'132	72.1%	1'382	1'641	119%
28.07.2008	2'471	66.4%	1'638	83.1%	986	80.8%	1'251	78.2%	6'346	74.6%	1'334	1'193	89%
04.08.2008	2'744	73.8%	1'692	85.9%	996	81.6%	1'312	82.0%	6'744	79.2%	1'286	1'087	85%
11.08.2008	2'972	79.9%	1'721	87.4%	1'009	82.7%	1'373	85.8%	7'075	83.1%	1'238	1'027	83%
18.08.2008	3'179	85.2%	1'796	91.2%	1'082	88.7%	1'468	91.8%	7'525	88.4%	1'193	1'633	137%
25.08.2008	3'300	88.7%	1'799	91.3%	1'088	89.2%	1'472	92.0%	7'659	90.0%	1'150	1'294	112%
01.09.2008	3'394	91.2%	1'770	89.8%	1'067	87.5%	1'461	91.3%	7'692	90.4%	1'108	1'020	92%
08.09.2008	3'514	94.5%	1'875	95.2%	1'159	95.0%	1'506	94.1%	8'054	94.6%	1'065	1'231	116%
15.09.2008	3'554	95.5%	1'868	94.8%	1'170	95.9%	1'519	94.9%	8'111	95.3%	859	1'691	197%
22.09.2008	3'463	93.1%	1'831	92.9%	1'140	93.4%	1'454	90.9%	7'888	92.7%	986	1'185	120%
29.09.2008	3'366	90.5%	1'778	90.3%	1'110	91.0%	1'396	87.3%	7'650	89.9%	949	920	97%
06.10.2008	3'257	87.6%	1'729	87.8%	1'083	88.8%	1'381	86.3%	7'450	87.6%	912	707	78%
13.10.2008	3'177	85.4%	1'696	86.1%	1'062	87.0%	1'370	85.6%	7'305	85.9%	875	700	80%
20.10.2008	3'104	83.4%	1'681	85.5%	1'037	85.0%	1'368	85.5%	7'190	84.5%	858	766	89%
27.10.2008	3'017	81.1%	1'657	84.3%	1'018	83.4%	1'345	84.1%	7'037	82.7%	850	661	78%
03.11.2008	2'914	78.3%	1'672	85.1%	1'045	85.7%	1'343	83.9%	6'974	82.0%	842	1'049	125%
10.11.2008	2'815	75.7%	1'703	86.7%	1'074	88.0%	1'338	83.6%	6'930	81.5%	834	828	99%
17.11.2008	2'707	72.8%	1'690	86.0%	1'067	87.5%	1'308	81.8%	6'772	79.6%	827	681	82%
24.11.2008	2'591	69.7%	1'668	84.9%	1'043	85.5%	1'285	80.3%	6'587	77.4%	823	753	92%
01.12.2008	2'461	66.2%	1'612	82.0%	981	80.4%	1'240	77.5%	6'294	74.0%	819	655	80%
08.12.2008	2'344	63.0%	1'561	79.4%	947	77.6%	1'210	75.6%	6'062	71.3%	815	655	80%
15.12.2008	2'207	59.3%	1'488	75.7%	892	73.1%	1'132	70.8%	5'719	67.2%	774	592	76%
22.12.2008	2'086	56.1%	1'431	72.8%	853	69.9%	1'091	68.2%	5'461	64.2%	802	962	120%
29.12.2008	2'012	54.1%	1'428	72.7%	839	68.8%	1'093	68.3%	5'372	63.2%	794	630	79%

Speicherinhalt Schweiz (100% = 8'505 GWh)

Bundesamt für Energie BFE
Office fédéral de l'énergie OFEN





Schweizerische Eidgenossenschaft
Confédération suisse
Confederazione Svizzera
Confederaziun svizra

Bundesamt für Energie BFE
Office fédéral de l'énergie OFEN

Verlauf des Speicherinhalts 2007/2008 (Stand Ende Monat)

(Schwankungsbreite hoch / tief 1972/73 bis 2006/07)

100% = 8'505 GWh

