

2007	Speicherinhalt - Contenu des bassins d'accumulation										Rhein in Rheinfelden - Rhin à Rheinfelden		
	Wallis - Valais		Graubünden - Grisons		Tessin - Tessin		Übrige CH - Reste CH		Total Schweiz - Suisse		Interpolierter Mittelwert Moyenne interpolée m³/s / 1935-2005	Aufgetretene Wasserführung Débit effective m³/s / 12:00h	
	GWh	%	GWh	%	GWh	%	GWh	%	GWh	%			%
Montag / Lundi 00:00h	3'720		1'970		1'225		1'600		8'515				
01.01.2007	2'225	59.8%	1'532	77.8%	779	63.6%	1'102	68.9%	5'638	66.2%	793	723	91%
08.01.2007	2'162	58.1%	1'529	77.6%	764	62.4%	1'109	69.3%	5'564	65.3%	785	834	106%
15.01.2007	2'087	56.1%	1'518	77.1%	735	60.0%	1'085	67.8%	5'425	63.7%	830	813	98%
22.01.2007	2'007	54.0%	1'497	76.0%	726	59.3%	1'067	66.7%	5'297	62.2%	789	892	113%
29.01.2007	1'832	49.2%	1'421	72.1%	686	56.0%	1'000	62.5%	4'939	58.0%	801	663	83%
05.02.2007	1'707	45.9%	1'226	62.2%	642	52.4%	905	56.6%	4'480	52.6%	813	519	64%
12.02.2007	1'557	41.9%	1'265	64.2%	612	50.0%	874	54.6%	4'308	50.6%	825	834	101%
19.02.2007	1'454	39.1%	1'212	61.5%	585	47.8%	840	52.5%	4'091	48.0%	837	792	95%
26.02.2007	1'336	35.9%	1'149	58.3%	559	45.6%	788	49.3%	3'832	45.0%	849	813	96%
05.03.2007	1'249	33.6%	1'092	55.4%	543	44.3%	779	48.7%	3'663	43.0%	862	1'524	177%
12.03.2007	1'153	31.0%	1'024	52.0%	523	42.7%	717	44.8%	3'417	40.1%	874	1'017	116%
19.03.2007	1'096	29.5%	1'000	50.8%	510	41.6%	657	41.1%	3'263	38.3%	899	856	95%
26.03.2007	989	26.6%	936	47.5%	482	39.3%	582	36.4%	2'989	35.1%	933	928	99%
02.04.2007	899	24.2%	896	45.5%	453	37.0%	548	34.3%	2'796	32.8%	967	870	90%
09.04.2007	840	22.6%	877	44.5%	432	35.3%	540	33.8%	2'689	31.6%	1'002	771	77%
16.04.2007	806	21.7%	880	44.7%	438	35.8%	565	35.3%	2'689	31.6%	1'039	737	71%
23.04.2007	804	21.6%	927	47.1%	467	38.1%	595	37.2%	2'793	32.8%	1'091	771	71%
30.04.2007	813	21.9%	998	50.7%	497	40.6%	637	39.8%	2'945	34.6%	1'144	750	66%
07.05.2007	824	22.2%	1'044	53.0%	527	43.0%	661	41.3%	3'056	35.9%	1'196	870	73%
14.05.2007	836	22.5%	1'096	55.6%	559	45.6%	704	44.0%	3'195	37.5%	1'249	744	60%
21.05.2007	885	23.8%	1'174	59.6%	628	51.3%	802	50.1%	3'489	41.0%	1'304	1'281	98%
28.05.2007	1'033	27.8%	1'287	65.3%	696	56.8%	844	52.8%	3'860	45.3%	1'359	1'320	97%
04.06.2007	1'076	28.9%	1'344	68.2%	765	62.4%	878	54.9%	4'063	47.7%	1'415	1'475	104%
11.06.2007	1'236	33.2%	1'442	73.2%	836	68.2%	940	58.8%	4'454	52.3%	1'470	1'242	84%
18.06.2007	1'536	41.3%	1'567	79.5%	940	76.7%	1'022	63.9%	5'065	59.5%	1'495	1'565	105%
25.06.2007	1'840	49.5%	1'650	83.8%	1'009	82.4%	1'092	68.3%	5'591	65.7%	1'477	1'451	98%

2007	Speicherinhalt - Contenu des bassins d'accumulation										Rhein in Rheinfelden - Rhin à Rheinfelden		
	Wallis -Valais		Graubünden - Grisons		Tessin - Tessin		Übrige CH - Reste CH		Total Schweiz- Suisse		Interpolierter Mittelwert	Aufgetretene Wasserführung	%
	GWh	%	GWh	%	GWh	%	GWh	%	GWh	%	Moyenne interpolée	Débit effective	
3'720		1975 ab 1.10.		1'225		1'600		8520 ab 1.10.		m³/s / 1935-2005	m³/s / 12:00h		
Montag / Lundi 00:00h													
02.07.2007	2'027	54.5%	1'640	83.2%	1'046	85.4%	1'120	70.1%	5'833	68.5%	1'460	1'361	93%
09.07.2007	2'212	59.5%	1'693	85.9%	1'072	87.5%	1'175	73.4%	6'152	72.2%	1'443	1'699	118%
16.07.2007	2'382	64.0%	1'716	87.1%	1'068	87.2%	1'193	74.6%	6'359	74.7%	1'421	1'534	108%
23.07.2007	2'621	70.5%	1'722	87.4%	1'063	86.8%	1'254	78.4%	6'660	78.2%	1'371	1'567	114%
30.07.2007	2'795	75.1%	1'740	88.3%	1'069	87.3%	1'301	81.3%	6'905	81.1%	1'321	1'405	106%
06.08.2007	2'916	78.4%	1'742	88.4%	1'064	86.9%	1'342	83.9%	7'064	83.0%	1'270	1'132	89%
13.08.2007	3'040	81.7%	1'761	89.4%	1'078	88.0%	1'402	87.6%	7'281	85.5%	1'220	2'037	167%
20.08.2007	3'191	85.8%	1'789	90.8%	1'074	87.7%	1'405	87.8%	7'459	87.6%	1'176	1'600	136%
27.08.2007	3'188	85.7%	1'803	91.5%	1'082	88.3%	1'376	86.0%	7'449	87.5%	1'134	1'109	98%
03.09.2007	3'403	91.5%	1'817	92.2%	1'053	86.0%	1'434	89.6%	7'707	90.5%	1'092	1'302	119%
10.09.2007	3'417	91.9%	1'788	90.8%	1'009	82.4%	1'431	89.4%	7'645	89.8%	1'050	1'147	109%
17.09.2007	3'462	93.1%	1'755	89.1%	967	78.9%	1'412	88.3%	7'596	89.2%	1'010	876	87%
24.09.2007	3'509	94.3%	1'762	89.4%	948	77.4%	1'424	89.0%	7'643	89.8%	974	890	91%
01.10.2007	3'432	92.3%	1'725	87.3%	930	75.9%	1'409	88.1%	7'496	88.0%	937	912	97%
08.10.2007	3'413	91.7%	1'751	88.6%	927	75.7%	1'409	88.1%	7'500	88.0%	901	919	102%
15.10.2007	3'349	90.0%	1'717	86.9%	910	74.3%	1'353	84.6%	7'329	86.0%	835	740	89%
22.10.2007	3'257	87.6%	1'664	84.2%	871	71.1%	1'311	81.9%	7'103	83.4%	858	649	76%
29.10.2007	3'122	83.9%	1'602	81.1%	820	66.9%	1'236	77.3%	6'780	79.6%	851	562	66%
05.11.2007	3'002	80.7%	1'565	79.2%	798	65.1%	1'202	75.1%	6'567	77.1%	844	502	59%
12.11.2007	2'857	76.8%	1'526	77.2%	765	62.4%	1'158	72.4%	6'306	74.0%	837	848	101%
19.11.2007	2'697	72.5%	1'456	73.7%	732	59.8%	1'090	68.1%	5'975	70.1%	831	568	68%
26.11.2007	2'563	68.9%	1'398	70.7%	712	58.1%	1'070	66.9%	5'743	67.4%	826	780	94%
03.12.2007	2'433	65.4%	1'345	68.1%	690	56.3%	1'045	65.5%	5'513	64.7%	821	954	116%
10.12.2007	2'333	62.7%	1'313	66.4%	672	54.9%	1'073	67.1%	5'391	63.3%	817	1'600	196%
17.12.2007	2'181	58.6%	1'247	63.1%	641	52.3%	1'002	62.6%	5'071	59.5%	811	976	120%
24.12.2007	2'039	54.8%	1'150	58.2%	609	49.7%	914	57.1%	4'712	55.3%	803	700	87%
31.12.2007	1'961	52.7%	1'140	57.7%	584	47.7%	915	57.2%	4'600	54.0%	794	562	71%

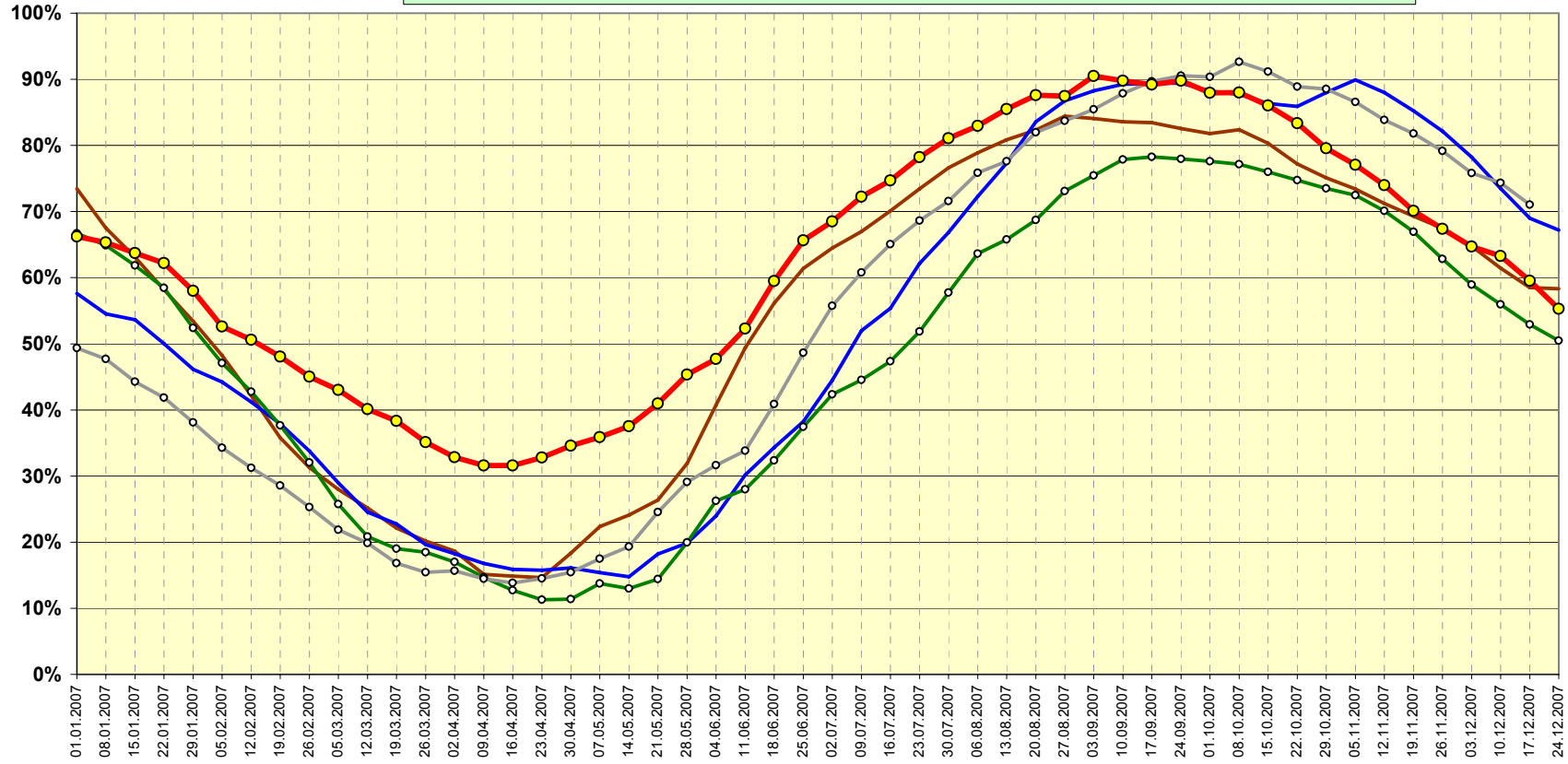


Schweizerische Eidgenossenschaft
Confédération suisse
Confederazione Svizzera
Confederaziun svizra

Speicherinhalt Schweiz (100% = 8'520 GWh)

Bundesamt für Energie BFE
Office fédéral de l'énergie OFEN

Jahr 2003 Jahr 2004 Jahr 2005 Jahr 2006 Jahr 2007



Verlauf des Speicherinhalts 2006/2007 (Stand Ende Monat)

(Schwankungsbreite hoch / tief 1972/73 bis 2006/07)

100% = 8'520 GWh

