

**WOCHENBERICHT**

**BULLETTIN HEBDOMADAIRE**

Bundesamt für Energie BFE

**SPEICHERINHALT**

**CONTENU DES BASSINS D'ACCUMULATION**

2017	Speicherinhalt - Contenu des bassins d'accumulation										Rhein in Rheinfelden - Rhin à Rheinfelden		
	Wallis -Valais		Graubünden - Grisons		Tessin - Tessin		Übrige CH - Reste CH		Total Schweiz- Suisse		Langjähriger Tagesmittelwert Moyenne journalière de longue date m³/s / 1933-2016	Aufgetretene Wasserführung Débit effectif m³/s / 12:00h	
	GWh 4'030	%	GWh 1'980	%	GWh 1'235	%	GWh 1'590	%	GWh 8'835	%			%
Montag / Lundi 00:00h													
02.01.2017	2'042	51.1%	1'028	51.9%	548	44.4%	848	53.3%	<b>4'466</b>	<b>50.7%</b>	783	425	54%
09.01.2017	1'820	45.5%	939	47.4%	503	40.7%	802	50.4%	<b>4'064</b>	<b>46.2%</b>	766	465	61%
16.01.2017	1'572	39.3%	816	41.2%	444	36.0%	712	44.8%	<b>3'544</b>	<b>40.2%</b>	785	449	57%
23.01.2017	1'290	32.3%	660	33.3%	376	30.4%	602	37.9%	<b>2'928</b>	<b>33.3%</b>	752	438	58%
30.01.2017	1'060	26.5%	520	26.3%	318	25.7%	535	33.6%	<b>2'433</b>	<b>27.6%</b>	761	404	53%
06.02.2017	960	24.0%	488	24.6%	288	23.3%	549	34.5%	<b>2'285</b>	<b>25.8%</b>	836	727	87%
13.02.2017	847	21.2%	440	22.2%	255	20.6%	529	33.3%	<b>2'071</b>	<b>23.4%</b>	828	552	67%
20.02.2017	754	18.9%	413	20.9%	234	18.9%	509	32.0%	<b>1'910</b>	<b>21.6%</b>	796	527	66%
27.02.2017	685	17.1%	374	18.9%	212	17.2%	499	31.4%	<b>1'770</b>	<b>20.0%</b>	808	604	75%
06.03.2017	607	15.2%	343	17.3%	191	15.5%	506	31.8%	<b>1'647</b>	<b>18.6%</b>	814	932	114%
13.03.2017	543	13.6%	303	15.3%	174	14.1%	541	34.0%	<b>1'561</b>	<b>17.7%</b>	854	1'239	145%
20.03.2017	485	12.1%	270	13.6%	160	13.0%	546	34.3%	<b>1'461</b>	<b>16.5%</b>	882	1'096	124%
27.03.2017	416	10.4%	228	11.5%	165	13.4%	505	31.8%	<b>1'314</b>	<b>14.9%</b>	943	931	99%
03.04.2017	352	8.8%	224	11.3%	170	13.8%	477	30.0%	<b>1'223</b>	<b>13.8%</b>	954	848	89%
10.04.2017	353	8.8%	185	9.3%	170	13.8%	455	28.6%	<b>1'163</b>	<b>13.2%</b>	1'042	635	61%
17.04.2017	336	8.4%	203	10.3%	178	14.4%	478	30.1%	<b>1'195</b>	<b>13.5%</b>	1'031	741	72%
24.04.2017	273	6.8%	189	9.5%	153	12.4%	432	27.2%	<b>1'047</b>	<b>11.8%</b>	1'072	672	63%
01.05.2017	207	5.2%	178	9.0%	152	12.3%	405	25.5%	<b>942</b>	<b>10.7%</b>	1'100	1'171	106%
08.05.2017	175	4.4%	170	8.6%	135	10.9%	399	25.1%	<b>879</b>	<b>9.9%</b>	1'172	1'431	122%
15.05.2017	191	4.8%	205	10.4%	147	11.9%	439	27.6%	<b>982</b>	<b>11.1%</b>	1'271	1'217	96%
22.05.2017	270	6.8%	302	15.3%	209	16.9%	526	33.1%	<b>1'307</b>	<b>14.8%</b>	1'336	1'115	83%
29.05.2017	445	11.1%	428	21.6%	302	24.5%	620	39.0%	<b>1'795</b>	<b>20.3%</b>	1'341	1'029	77%
05.06.2017	669	16.7%	604	30.5%	417	33.8%	740	46.5%	<b>2'430</b>	<b>27.5%</b>	1'426	1'371	96%
12.06.2017	852	21.3%	771	38.9%	521	42.2%	842	53.0%	<b>2'986</b>	<b>33.8%</b>	1'528	989	65%
19.06.2017	1'212	30.3%	891	45.0%	610	49.4%	922	58.0%	<b>3'635</b>	<b>41.1%</b>	1'529	980	64%
26.06.2017	1'558	39.0%	895	45.2%	657	53.2%	973	61.2%	<b>4'083</b>	<b>46.2%</b>	1'517	910	60%

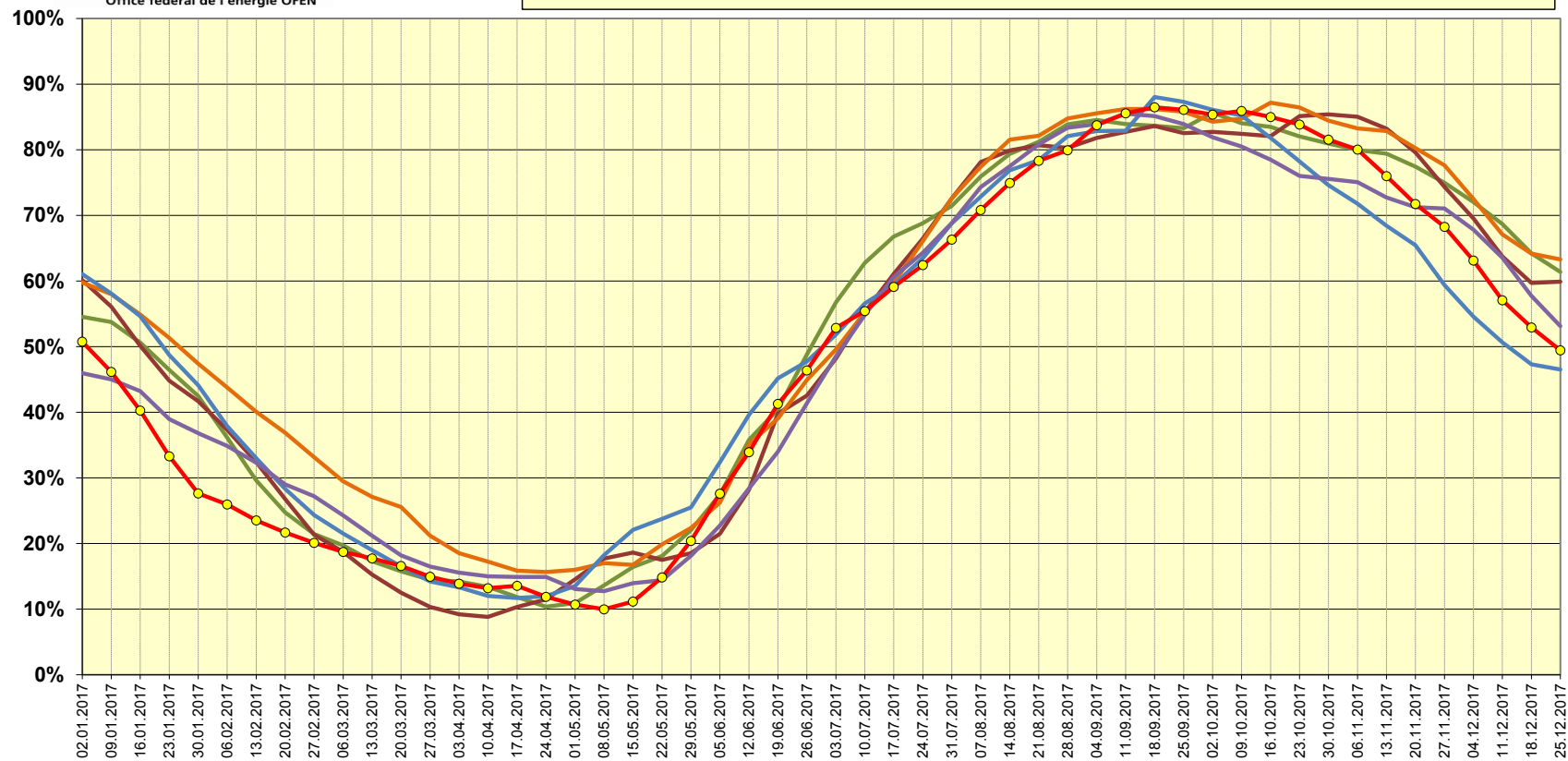
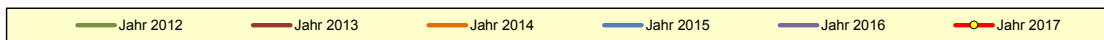
Quelle Daten Wasserführung Rhein in Rheinfelden: Bundesamt für Umwelt BAFU

2017	Speicherinhalt - Contenu des bassins d'accumulation										Rhein in Rheinfelden - Rhin à Rheinfelden		
	Wallis - Valais		Graubünden - Grisons		Tessin - Tessin		Übrige CH - Reste CH		Total Schweiz- Suisse		Langjähriger Tagesmittelwert Moyenne journalière de longue date	Aufgetretene Wasserführung Débit effectif	
	GWh	%	GWh	%	GWh	%	GWh	%	GWh	%	m³/s / 1933-2016	m³/s / 12:00h	%
	4'030		1'980		1'235		1'590		8'835				
Montag / Lundi 00:00h													
03.07.2017	1'767	44.2%	1'090	55.1%	765	61.9%	1'031	64.8%	4'653	52.7%	1'460	1'025	70%
10.07.2017	1'953	48.8%	1'131	57.1%	777	62.9%	1'018	64.0%	4'879	55.2%	1'443	998	69%
17.07.2017	2'172	54.3%	1'184	59.8%	780	63.2%	1'070	67.3%	5'206	58.9%	1'434	835	58%
24.07.2017	2'398	59.9%	1'230	62.1%	789	63.9%	1'084	68.2%	5'501	62.3%	1'376	806	59%
31.07.2017	2'582	64.5%	1'286	64.9%	794	64.3%	1'180	74.2%	5'842	66.1%	1'282	1'119	87%
07.08.2017	2'850	71.2%	1'337	67.5%	809	65.5%	1'243	78.2%	6'239	70.6%	1'220	899	74%
14.08.2017	3'010	75.2%	1'440	72.7%	851	68.9%	1'300	81.8%	6'601	74.7%	1'226	1'150	94%
21.08.2017	3'193	79.7%	1'506	76.1%	867	70.2%	1'335	84.0%	6'901	78.1%	1'172	961	82%
28.08.2017	3'336	83.3%	1'536	77.6%	855	69.2%	1'316	82.8%	7'043	79.7%	1'150	792	69%
04.09.2017	3'496	87.3%	1'633	82.5%	872	70.6%	1'378	86.7%	7'379	83.5%	1'085	1'397	129%
11.09.2017	3'547	88.6%	1'707	86.2%	887	71.8%	1'396	87.8%	7'537	85.3%	1'039	1'073	103%
18.09.2017	3'564	89.0%	1'773	89.5%	893	72.3%	1'388	87.3%	7'618	86.2%	1'006	1'058	105%
25.09.2017	3'549	88.6%	1'794	90.6%	876	70.9%	1'366	85.9%	7'585	85.9%	954	930	97%
02.10.2017	3'553	88.7%	1'792	90.5%	839	67.9%	1'335	84.0%	7'519	85.1%	913	833	91%
09.10.2017	3'589	89.6%	1'800	90.9%	825	66.8%	1'355	85.2%	7'569	85.7%	895	1'014	113%
16.10.2017	3'565	89.0%	1'783	90.1%	791	64.0%	1'348	84.8%	7'487	84.7%	865	760	88%
23.10.2017	3'538	88.3%	1'757	88.7%	751	60.8%	1'342	84.4%	7'388	83.6%	813	669	82%
30.10.2017	3'445	86.0%	1'710	86.4%	700	56.7%	1'328	83.5%	7'183	81.3%	823	669	81%
06.11.2017	3'348	83.6%	1'697	85.7%	663	53.7%	1'342	84.4%	7'050	79.8%	800	852	107%
13.11.2017	3'184	79.5%	1'624	82.0%	603	48.8%	1'284	80.8%	6'695	75.8%	810	1'562	193%
20.11.2017	2'973	74.2%	1'551	78.3%	576	46.6%	1'221	76.8%	6'321	71.5%	860	922	107%
27.11.2017	2'808	70.1%	1'436	72.5%	523	42.3%	1'246	78.4%	6'013	68.1%	835	870	104%
04.12.2017	2'578	64.4%	1'324	66.9%	497	40.2%	1'161	73.0%	5'560	62.9%	805	741	92%
11.12.2017	2'319	57.9%	1'218	61.5%	488	39.5%	1'004	63.1%	5'029	56.9%	837	1'455	174%
18.12.2017	2'142	53.2%	1'113	56.2%	464	37.6%	958	60.3%	4'677	52.9%	832	1'349	162%
25.12.2017	1'983	49.2%	1'034	52.2%	428	34.7%	922	58.0%	4'367	49.4%	807	980	121%

Quelle Daten Wasserführung Rhein in Rheinfelden: Bundesamt für Umwelt BAFU

## Speicherinhalt Schweiz (100% = 8'835 GWh)

Bundesamt für Energie BFE  
 Office fédéral de l'énergie OFEN





Schweizerische Eidgenossenschaft  
Confédération suisse  
Confederazione Svizzera  
Confederaziun svizra

Bundesamt für Energie BFE  
Office fédéral de l'énergie OFEN

## Verlauf des Speicherinhalts 2016/2017 (Stand Ende Monat)

(Schwankungsbreite hoch / tief 1972/73 bis 2016/17)

100% = 8'835 GWh

